

Chicago Wilderness, USA

The Field Museum, Illinois Butterfly Monitoring Network

Photos by: John and Jane Balaban, Tom Peterson, Doug Taron

Produced by: Rebecca Collings and John Balaban

© The Field Museum, Chicago, IL 60605 USA. [<http://idtools.fieldmuseum.org>] [CRCG@fieldmuseum.org]

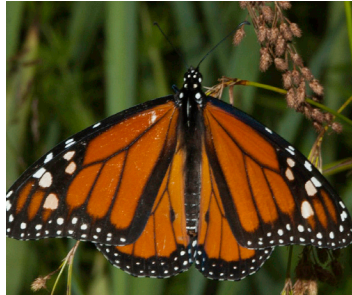
version 1 (7/2013)

VICEROY: line crossing through hind wing, smaller than a Monarch. Host plants: Willows (*Salix*).



1 **Viceroy**
Limenitis archippus

MONARCH: no line crossing through the hind wing, much larger and a stronger flier than a Viceroy. Host plants: Milkweeds (*Asclepias*).

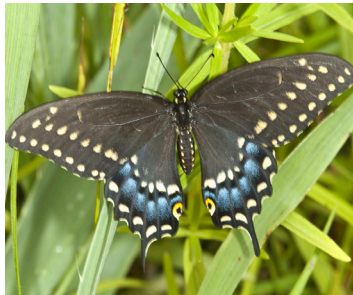


2 **Monarch - Male**
Danaus plexippus



3 **Monarch - Female**
Danaus plexippus

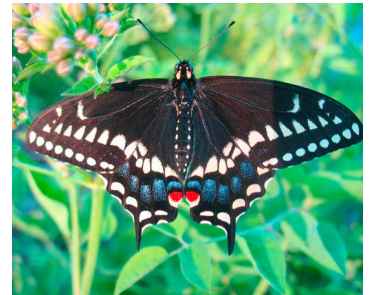
BLACK SWALLOWTAIL: in addition to outer line of yellow dots, male has a strong inner line, and blue may be almost absent. Female with much weaker inner line of yellow with separate spot near tip of wing. Some blue on hind-wing, but does not extend up into hindwing above row of faint spots. Host Plants: Parsley Family (Apiaceae).



4 **Black Swallowtail**
Papilio polyxenes



5 **Black Swallowtail**
Papilio polyxenes

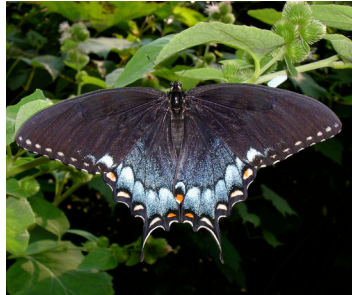


6 **Black Swallowtail**
Papilio polyxenes

EASTERN TIGER SWALLOWTAIL: no inner line of yellow dots. No dot near tip. Lots of blue on hindwing, up into center of hind wing. No inner row of orange dots. Tiger stripes often still visible on female dark form. Host Plants: Black Cherry (*Prunus serotina*) and Tulip Tree (*Liriodendron tulipifera*).



7 **Eastern Tiger Swallowtail**
Papilio glaucus



8 **Eastern Tiger Swallowtail**
Papilio glaucus



9 **Eastern Tiger Swallowtail**
Papilio glaucus

RED SPOTTED PURPLE: no tails, no line of yellow spots. Blue-green iridescence depends on lighting. "Red" (orange) spots on underside. Major Host Plants: Cherry (*Prunus*) and others.



10 **Red Spotted Purple**
Limenitis arthemis astyanax



11 **Red Spotted Purple**
Limenitis arthemis astyanax



12 **Red Spotted Purple**
Limenitis arthemis astyanax

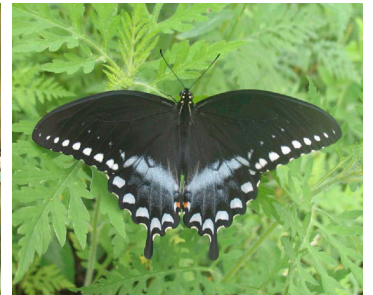
GIANT AND SPICEBUSH SWALLOWTAILS: Giant swallowtail is a large butterfly with dark wings above with two yellow crossing stripes, below pale yellow. Host Plants: prickly ash (*Xanthoxylum*) and hoptree (*Ptelea*). Spicebush Swallowtail with half-moon shaped blue marks on the hindwings and cream-blue edge spots. Host Plants: Spicebush (*Lindera*) and Sassafras.



13 **Giant Swallowtail**
Papilio cresphontes



14 **Giant Swallowtail**
Papilio cresphontes



15 **Spicebush Swallowtail**
Papilio troilus