

## Chicago Wilderness, USA

The Field Museum, Illinois Butterfly Monitoring Network

Photos by: John and Jane Balaban, Tom Peterson, Doug Taron

Produced by: Rebecca Collings and John Balaban

© The Field Museum, Chicago, IL 60605 USA. [<http://idtools.fieldmuseum.org>] [[CRCG@fieldmuseum.org](mailto:CRCG@fieldmuseum.org)]

version 1 (7/2013)

**COMMON BUCKEYE:** prominent eye-spots along the margins of both wings, two orange bars on the upper forewing. Host Plants: False Foxgloves (*Agalinis*), Toadflax (*Linnaria*), and Plantain (*Plantago*).



16 Common Buckeye  
*Junonia coenia*



17 Common Buckeye  
*Junonia coenia*



18 Common Buckeye  
*Junonia coenia*

**NORTHERN PEARLY-EYE:** no large eyespots. Eyespots on the underside edge of the wing surrounded by yellow. Tends to be more strongly patterned on underside. Somewhat scalloped hindwing. Savanna species. Host Plants: grasses (Poaceae).



19 Northern Pearly Eye  
*Lethe anthedon*



20 Northern Pearly Eye  
*Lethe anthedon*



21 Northern Pearly Eye  
*Lethe anthedon*

**EYED BROWN:** no large eye spots. Eyespots on the underside edge of the wing surrounded by yellow and then surrounded by individual rings of brown. Each spot looks like a donut. Rounded hindwing. Found in sunny open areas. Host Plants: Sedges (*Carex*).



22 Eyed Brown  
*Lethe eurydice*



23 Eyed Brown  
*Lethe eurydice*



24 Eyed Brown  
*Lethe eurydice*

**LITTLE WOOD SATYR:** much smaller than the above species and quite variable. Eye spots on all wings. Found in woodlands. Host Plants: Grasses (Poaceae).



25 Little Wood Satyr  
*Megisto cymela*

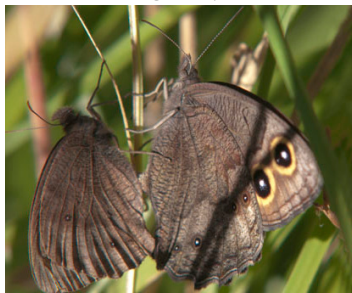


26 Little Wood Satyr  
*Megisto cymela*



27 Little Wood Satyr  
*Megisto cymela*

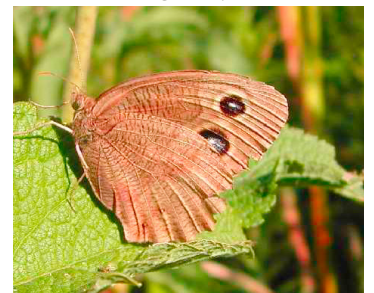
**COMMON WOOD NYMPH:** two large eye spots on forewing. Small dots in a row on hindwing. Found in open habitats. Host plants: Grasses (Poaceae).



28 Common Wood Nymph  
*Cercyonis pegala*



29 Common Wood Nymph  
*Cercyonis pegala*



30 Common Wood Nymph  
*Cercyonis pegala*