

Chicago Wilderness, USA

The Field Museum, Illinois Butterfly Monitoring Network

Photos by: John and Jane Balaban, Tom Peterson, Doug Taron

Produced by: Rebecca Collings and John Balaban

© The Field Museum, Chicago, IL 60605 USA. [<http://idtools.fieldmuseum.org>] [CRCG@fieldmuseum.org]

version 1 (7/2013)

HACKBERRY: single eyespot on the forewing and series of small eyespots on the hindwing.
Host Plant: Hackberry (*Celtis*).



46 Hackberry
Asterocampa celtis



47 Hackberry
Asterocampa celtis

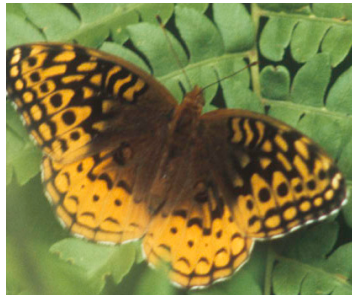


48 Hackberry
Asterocampa celtis

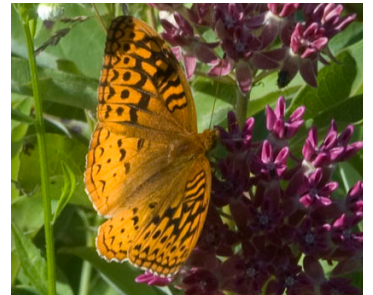
GREAT SPANGLED FRITILLARY: large, very fast butterfly. Underside with a light band between rows of silver spots. Several species of Fritillary are found in the area. Host Plant: Violets (*Viola*).



49 Great Spangled Fritillary
Speyeria cybele



50 Great Spangled Fritillary
Speyeria cybele



51 Great Spangled Fritillary
Speyeria cybele

PEARL CRESCENT: long forewings. "Curly" patterns near body, black edging on top. Row of solid, black dots along hindwing margin. Fairly plain underneath. Host Plants: Asters (*Aster*).



52 Pearl Crescent
Phyciodes tharos



53 Pearl Crescent
Phyciodes tharos



54 Pearl Crescent
Phyciodes tharos

SILVERY CHECKERSPOT: Uncommon butterfly that is very similar to Pearl Crescent. Black dots on hindwing are actually donuts (with a light center). Larger than Pearl Crescent. Host Plants: Sunflowers (Asteraceae).



55 Silvery Checkerspot
Chlosyne nycteis



56 Silvery Checkerspot
Chlosyne nycteis



57 Silvery Checkerspot
Chlosyne nycteis

MOURNING CLOAK: large butterfly with light band at edge. The only similar insect is a grasshopper. Host Plants: Willows (*Salix*) and other trees and shrubs.



58 Mourning Cloak
Nymphalis antiopa



59 Mourning Cloak
Nymphalis antiopa



60 Mourning Cloak chrysalis
Nymphalis antiopa